

A-A

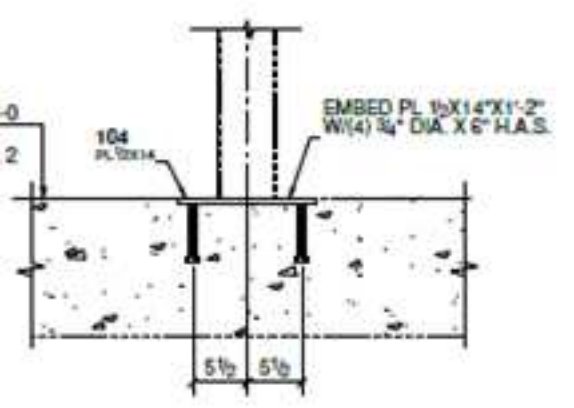
0
2

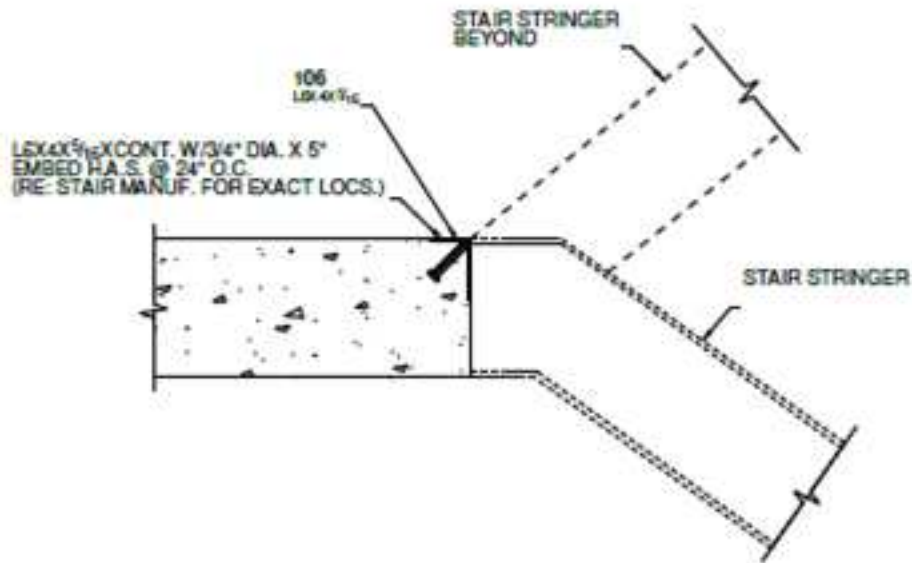
104
PL. 1/2X14

EMBED PL. 1/2X14"X1'-2"
W/ (4) 3/4" DIA. X 6" H.A.S.

5 1/2

5 1/2





EMBED AT STAIR LANDING CONNECTION DETAIL

EL. 483'-0
T.O.C.
LEVEL 2

EMBED PL 1/2" X 8" X 7'-6" AT
32" O.C. W/ (4) 1/2" DIA. X 5" H.A.S.



101
EMBED PLATE

3-SIDES
1/4"

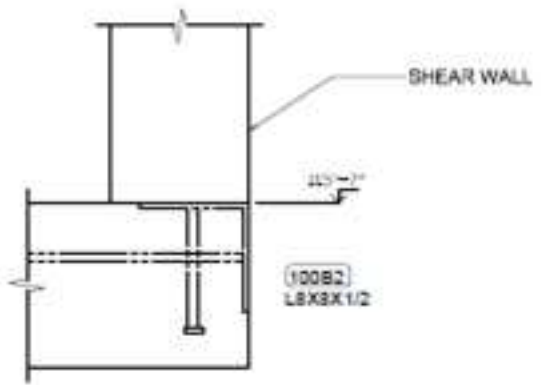
CMU WALL

9/8" DIA. THREADED ROD IN
HILTI HY-70 ADHESIVE W/ 5"
OF EMBEDMENT IN GROUTED
CELL. HAND TIGHTEN NUT AND
SCAR THREADS.

107
1/2" X 8" X 7'-6"

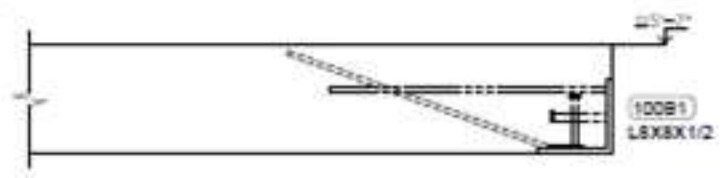
SECTION AT EXTERIOR SLAB

West
←

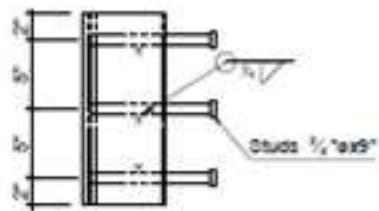
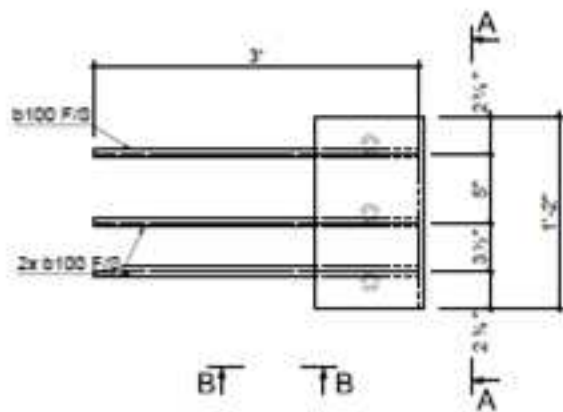


Detail view
A

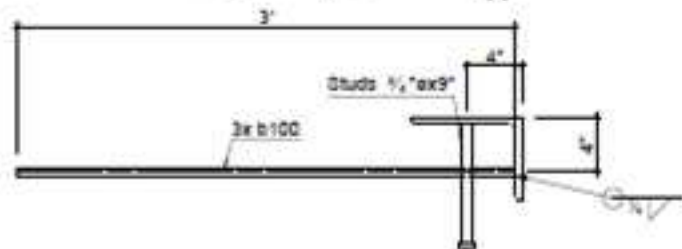
West
←



Detail view
B



Section A - A



Section B - B